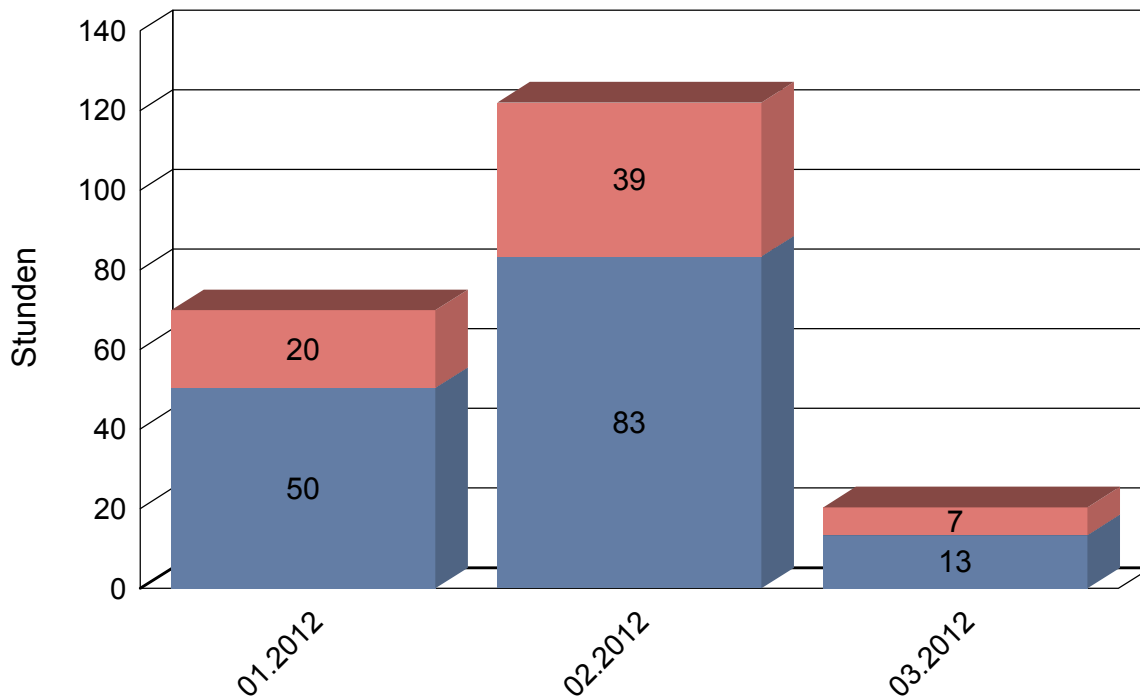


Temperaturen am Dachsensor und Boiler

Boiler-Ladezeiten

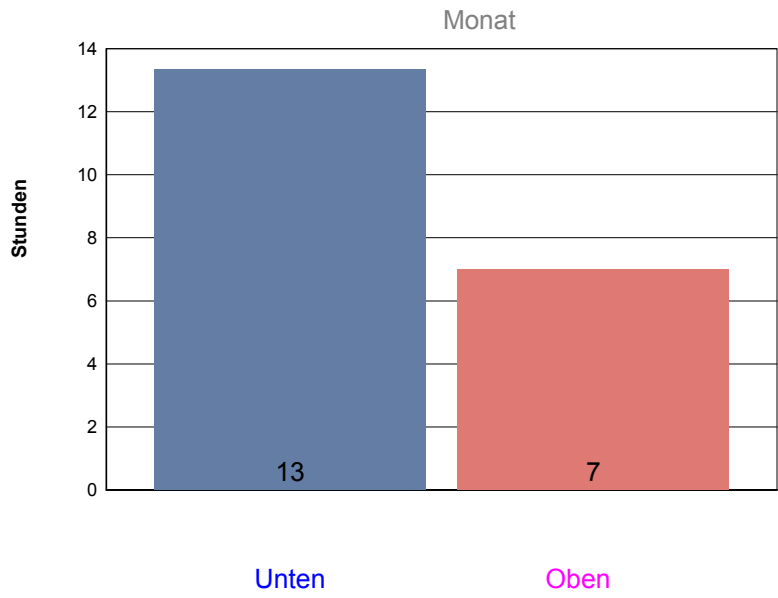
Pro Monat



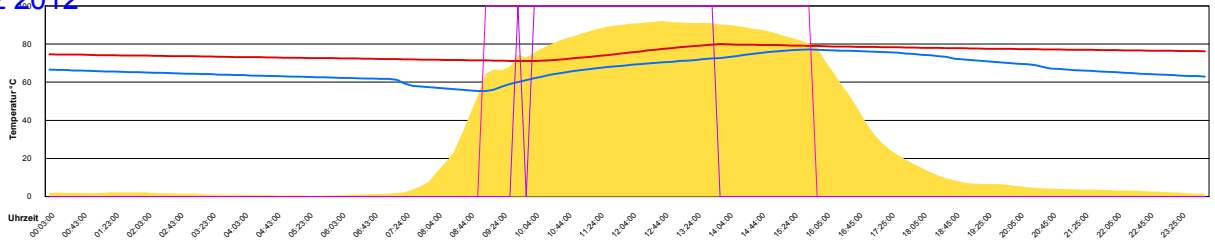
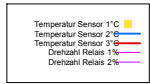
Die Temperatur wird am Kollektor gemessen, der auf dem Dach installiert ist, und alle 10 Minuten aufgezeichnet. Der Boiler wird mit Schichtladung betrieben, deshalb die Bezeichnungen 'Oben' für das oben im Boiler liegende Wärmetauschelement und 'Unten' für das untere.

März 2012

Boiler-Ladezeiten

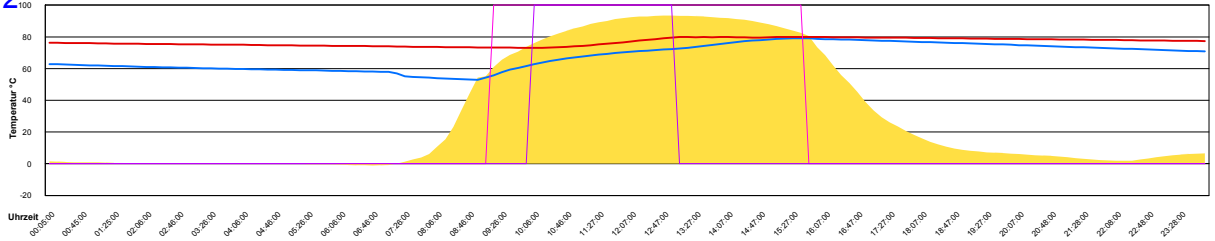
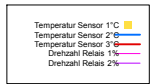


Donnerstag, 1. März 2012



Ladedauer Oben 4.0
Ladedauer unten 6.8

Freitag, 2. März 2012

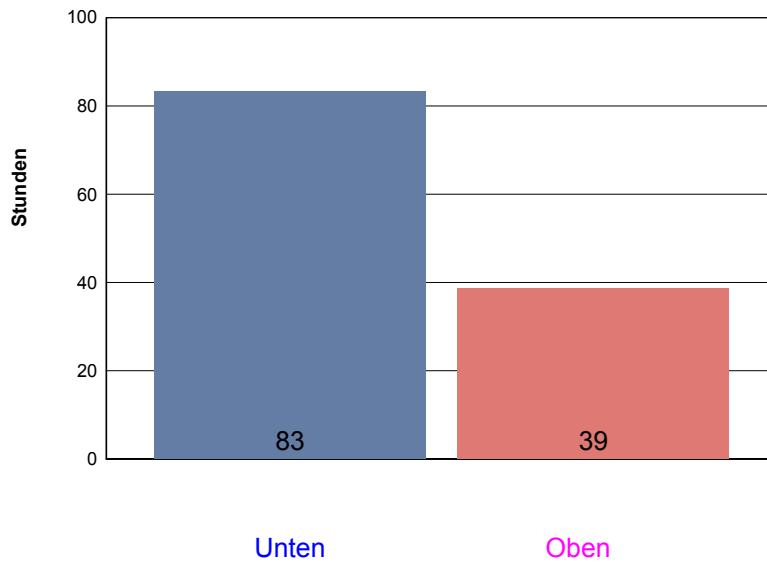


Ladedauer Oben 3.0
Ladedauer unten 6.5

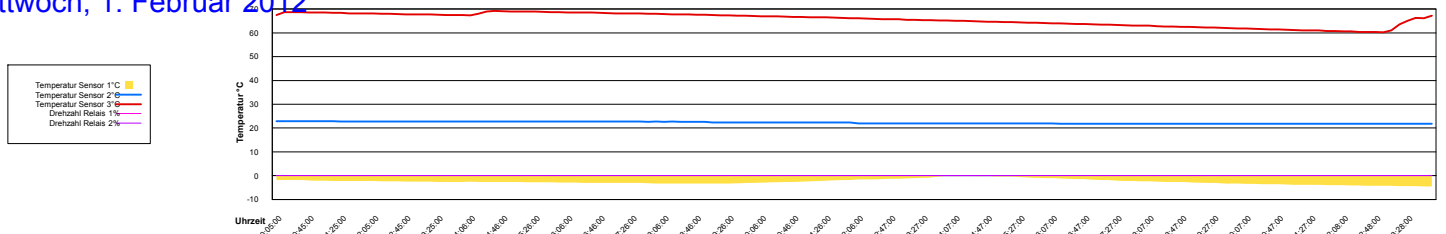
Februar 2012

Boiler-Ladezeiten

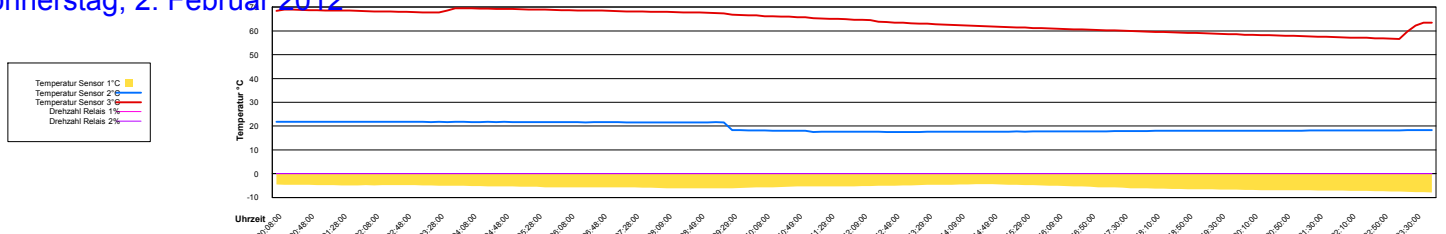
Monat



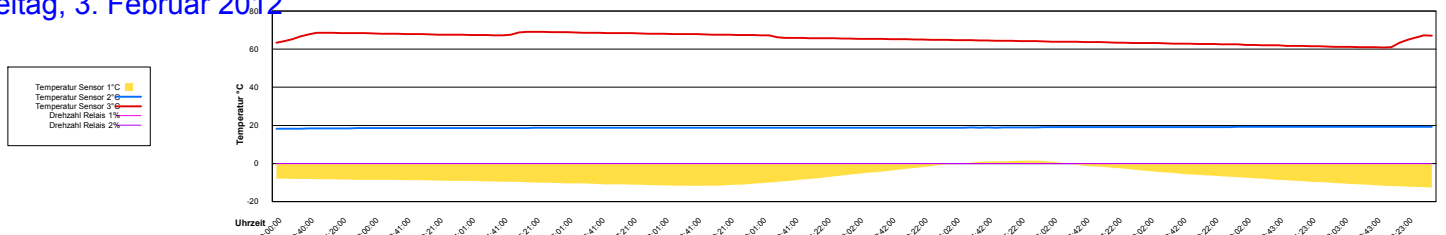
Mittwoch, 1. Februar 2012



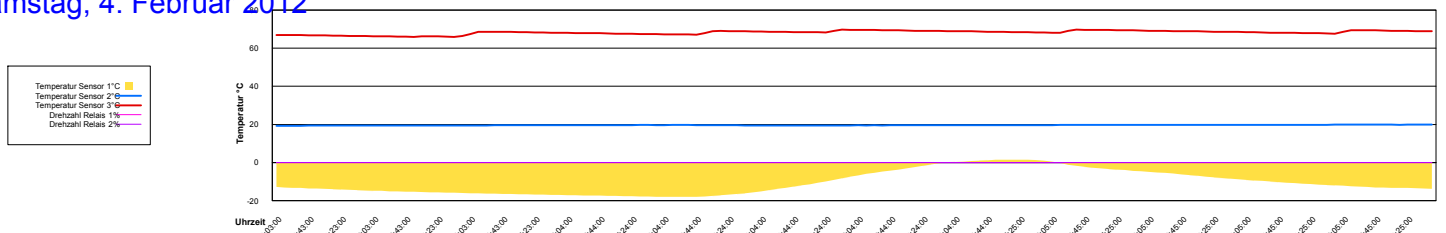
Donnerstag, 2. Februar 2012



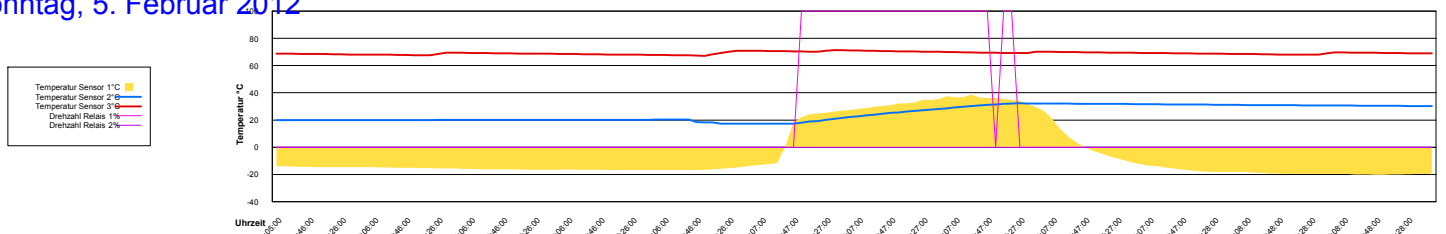
Freitag, 3. Februar 2012



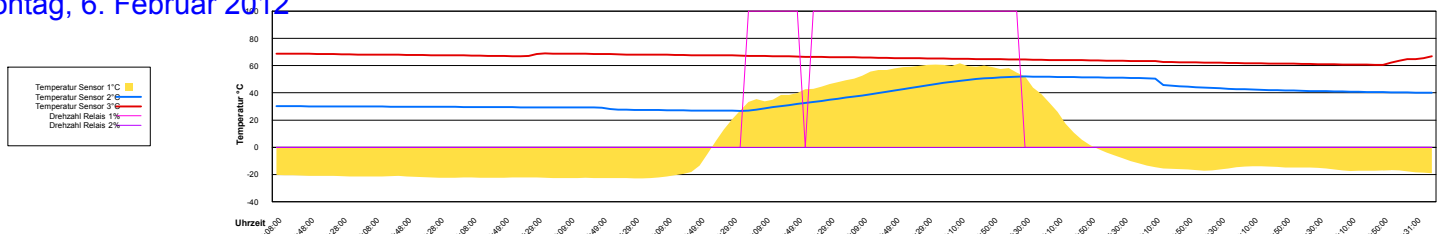
Samstag, 4. Februar 2012



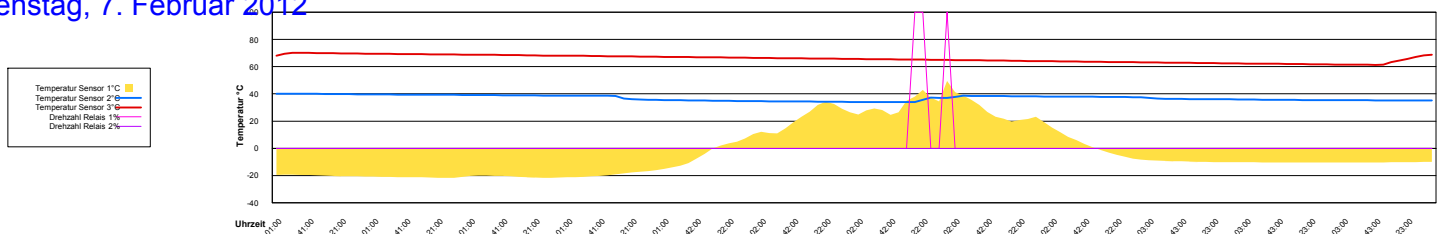
Sonntag, 5. Februar 2012



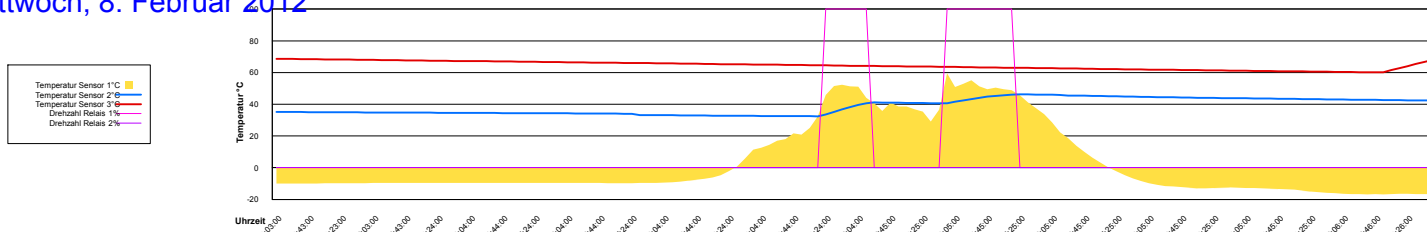
Montag, 6. Februar 2012



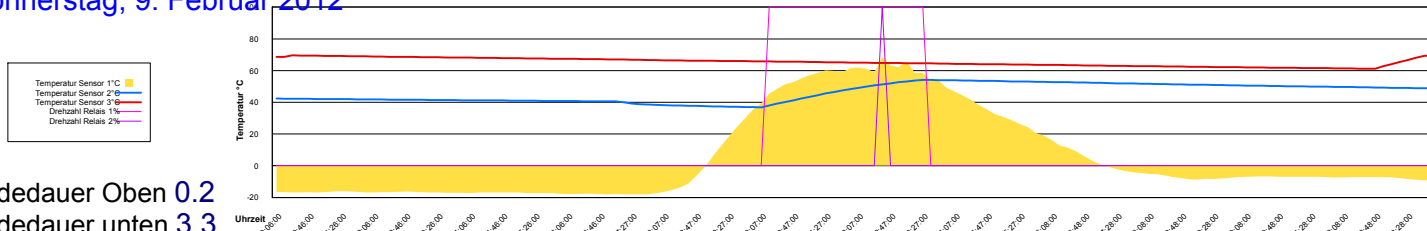
Dienstag, 7. Februar 2012



Mittwoch, 8. Februar 2012

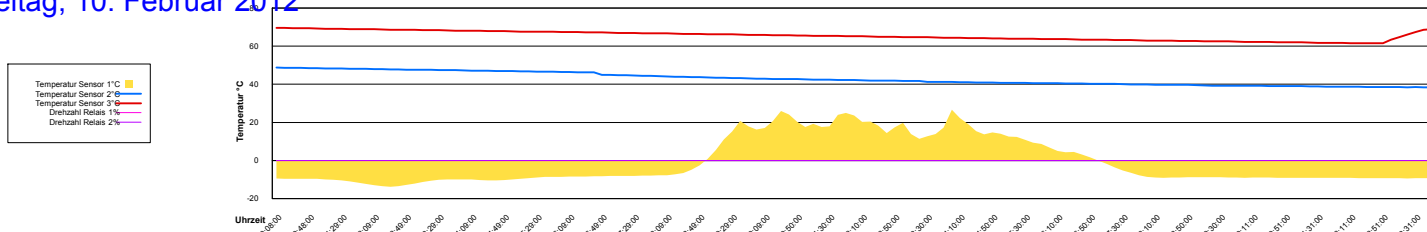


Donnerstag, 9. Februar 2012

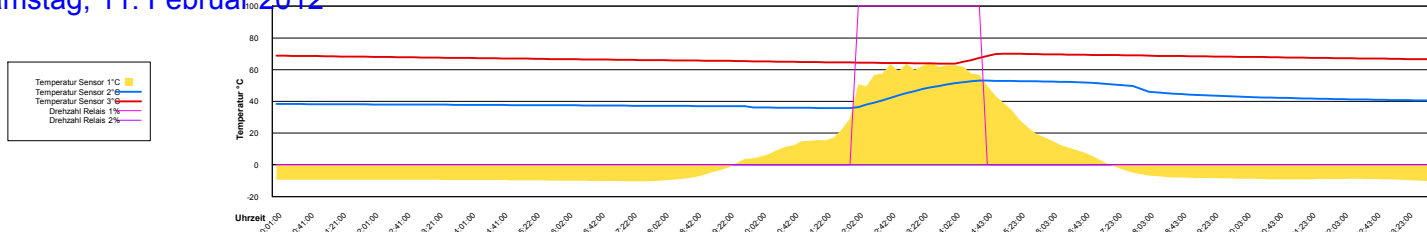


Ladedauer Oben 0.2
Ladedauer unten 3.3

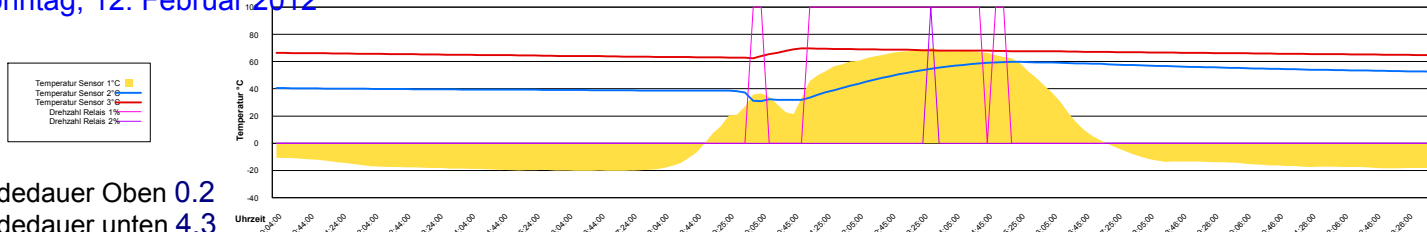
Freitag, 10. Februar 2012



Samstag, 11. Februar 2012

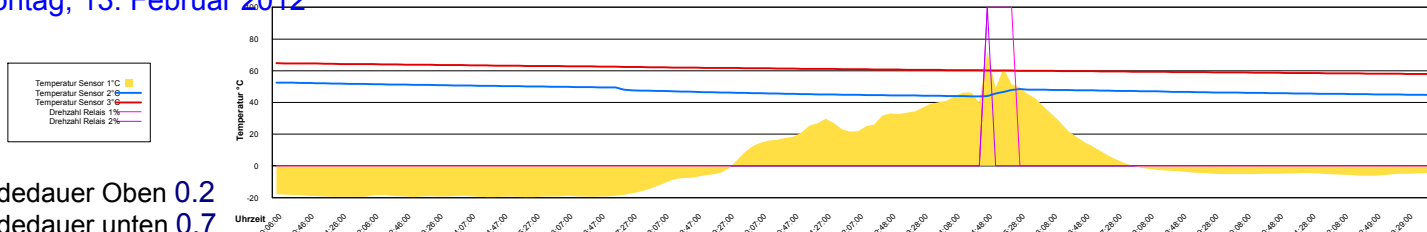


Sonntag, 12. Februar 2012



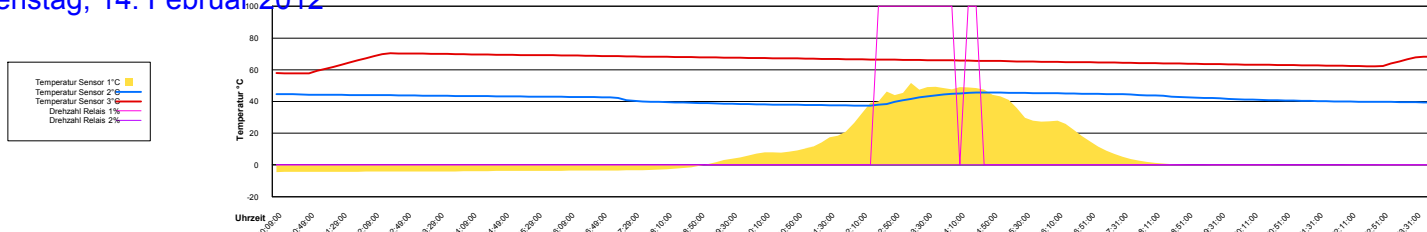
Ladedauer Oben 0.2
Ladedauer unten 4.3

Montag, 13. Februar 2012

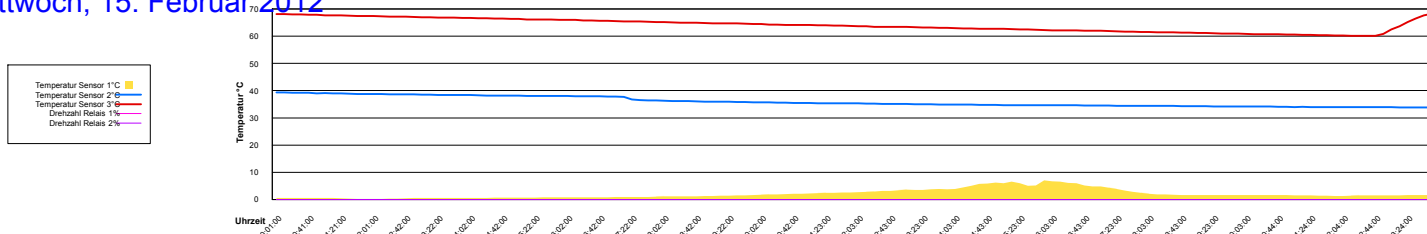


Ladedauer Oben 0.2
Ladedauer unten 0.7

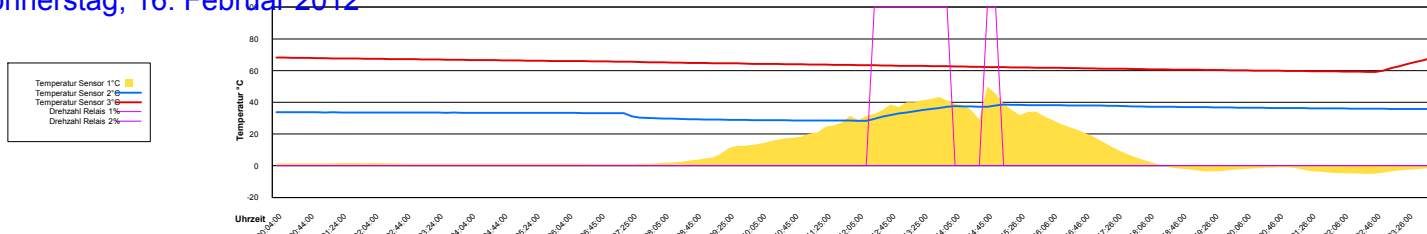
Dienstag, 14. Februar 2012



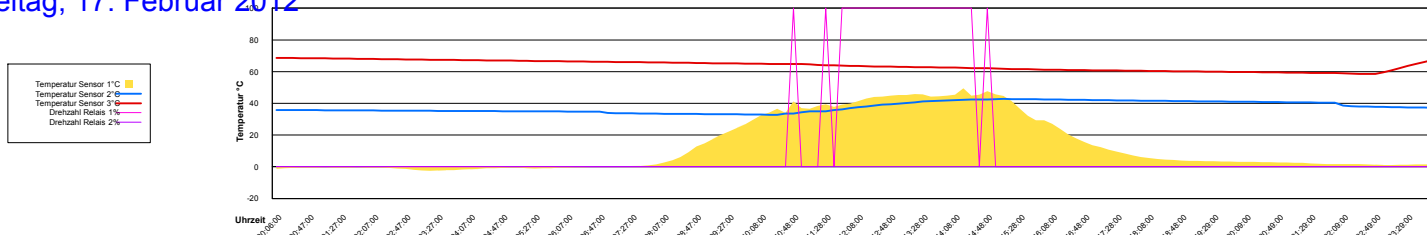
Mittwoch, 15. Februar 2012



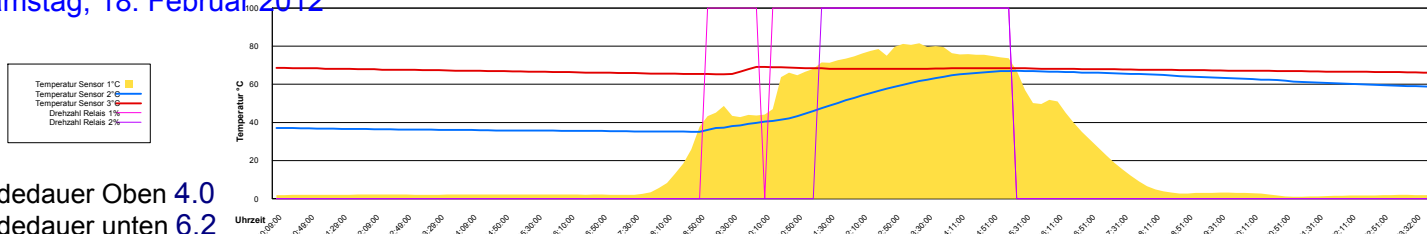
Donnerstag, 16. Februar 2012



Freitag, 17. Februar 2012

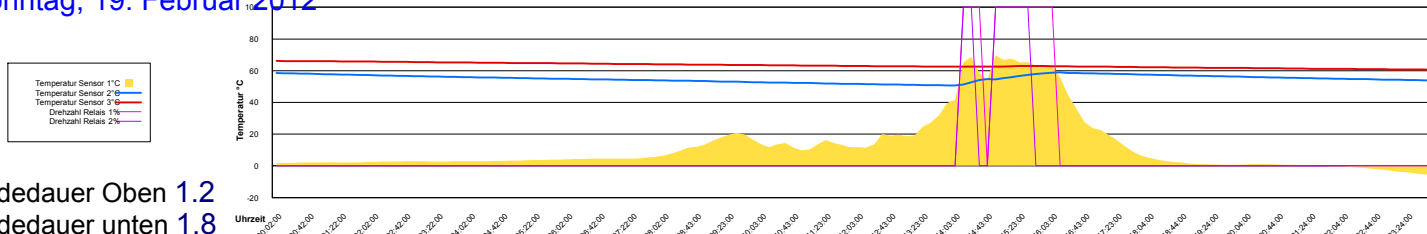


Samstag, 18. Februar 2012



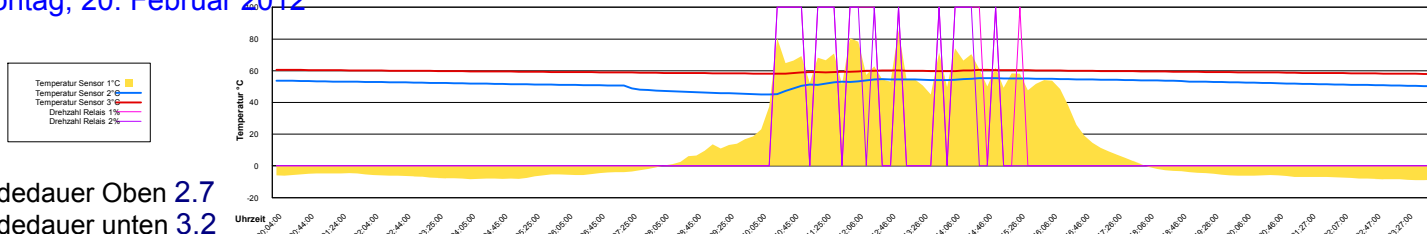
Ladedauer Oben 4.0
Ladedauer unten 6.2

Sonntag, 19. Februar 2012



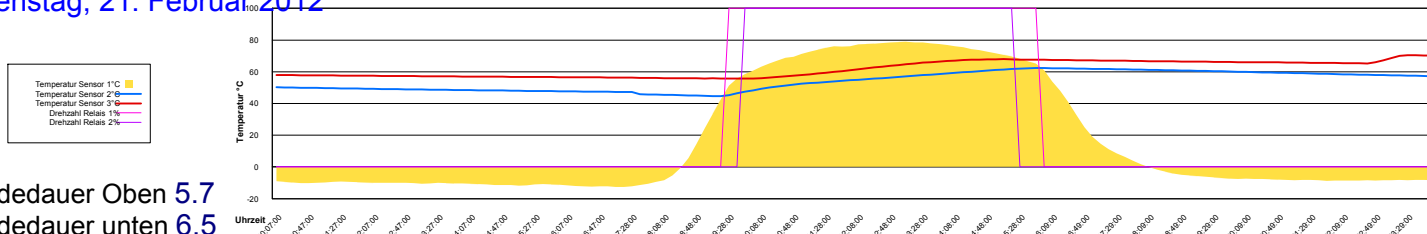
Ladedauer Oben 1.2
Ladedauer unten 1.8

Montag, 20. Februar 2012



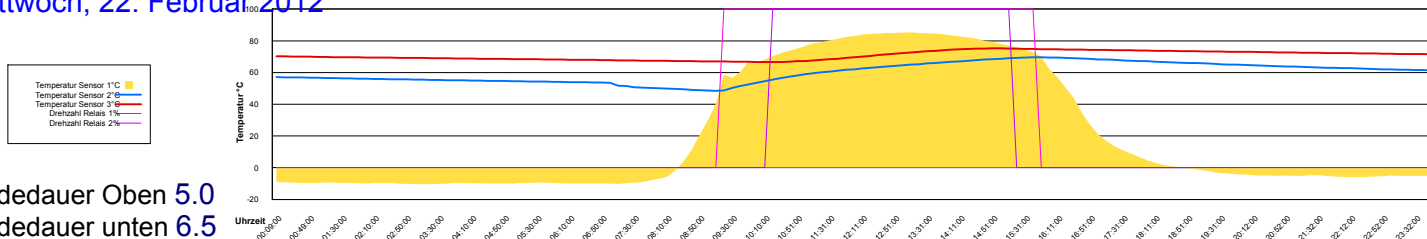
Ladedauer Oben 2.7
Ladedauer unten 3.2

Dienstag, 21. Februar 2012



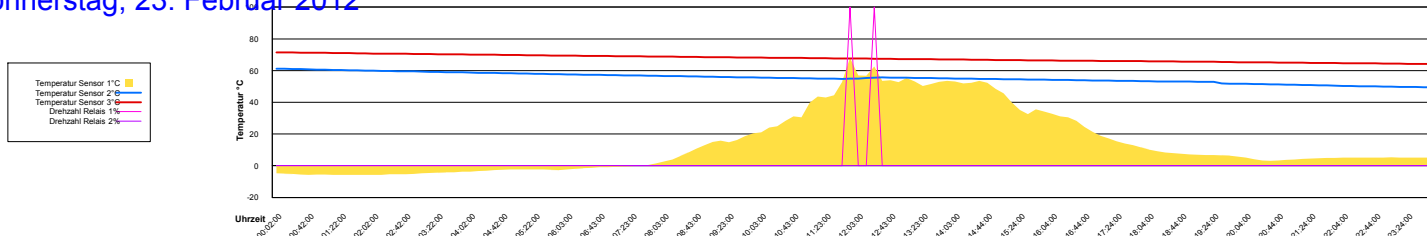
Ladedauer Oben 5.7
Ladedauer unten 6.5

Mittwoch, 22. Februar 2012

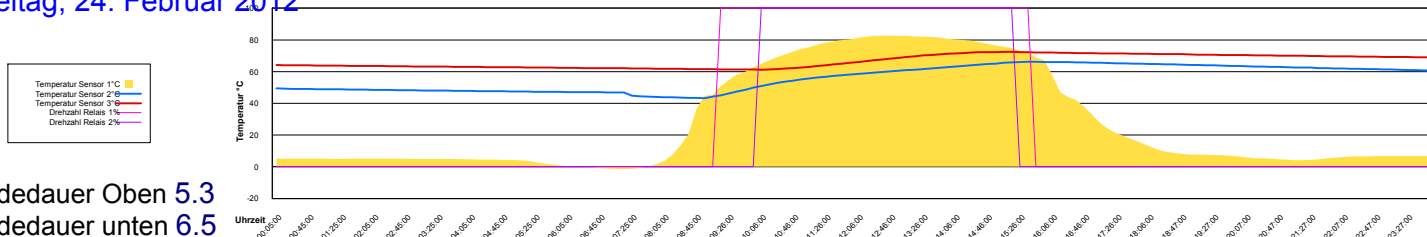


Ladedauer Oben 5.0
Ladedauer unten 6.5

Donnerstag, 23. Februar 2012

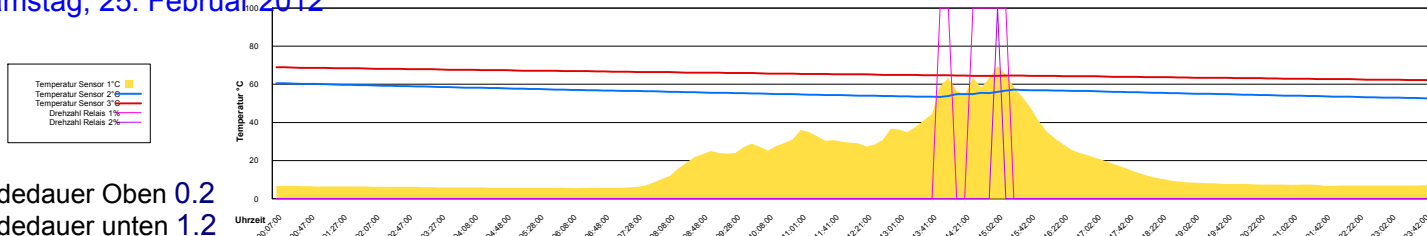


Freitag, 24. Februar 2012



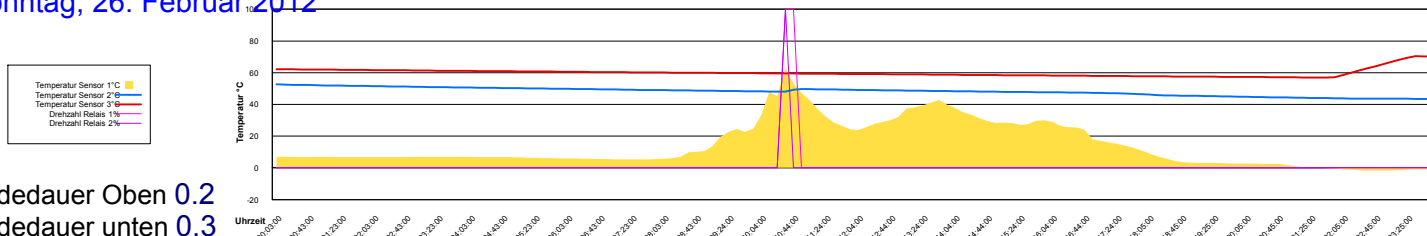
Ladedauer Oben 5.3
Ladedauer unten 6.5

Samstag, 25. Februar 2012



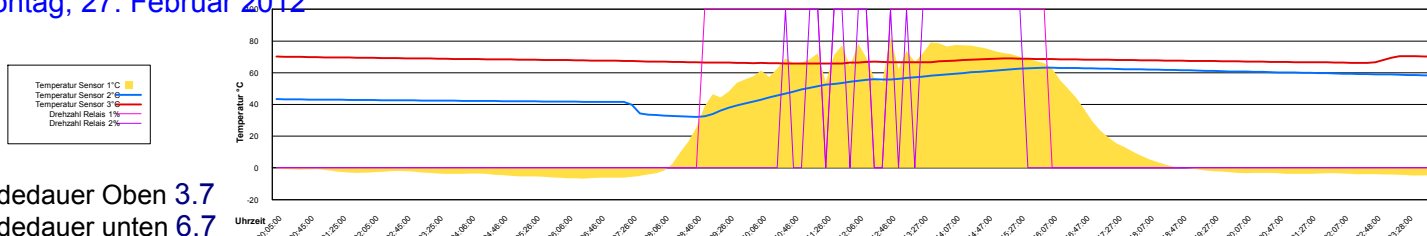
Ladedauer Oben 0.2
Ladedauer unten 1.2

Sonntag, 26. Februar 2012



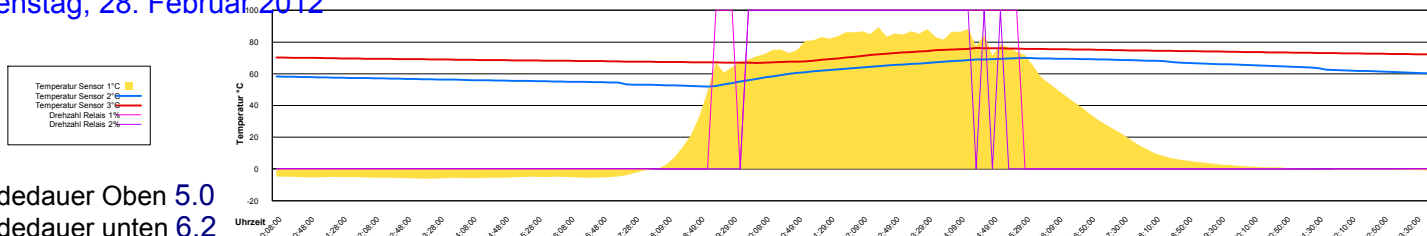
Ladedauer Oben 0.2
Ladedauer unten 0.3

Montag, 27. Februar 2012



Ladedauer Oben 3.7
Ladedauer unten 6.7

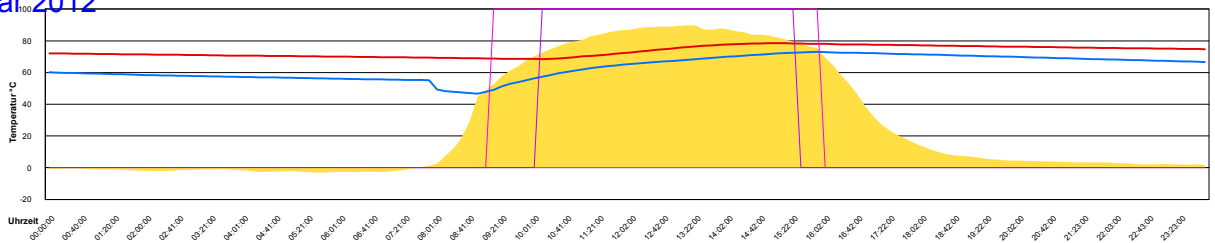
Dienstag, 28. Februar 2012



Ladedauer Oben 5.0
Ladedauer unten 6.2

Mittwoch, 29. Februar 2012

- Temperatur Sensor 1°C
- Temperatur Sensor 2°C
- Temperatur Sensor 3°C
- Drehzahl Relais 1%
- Drehzahl Relais 2%

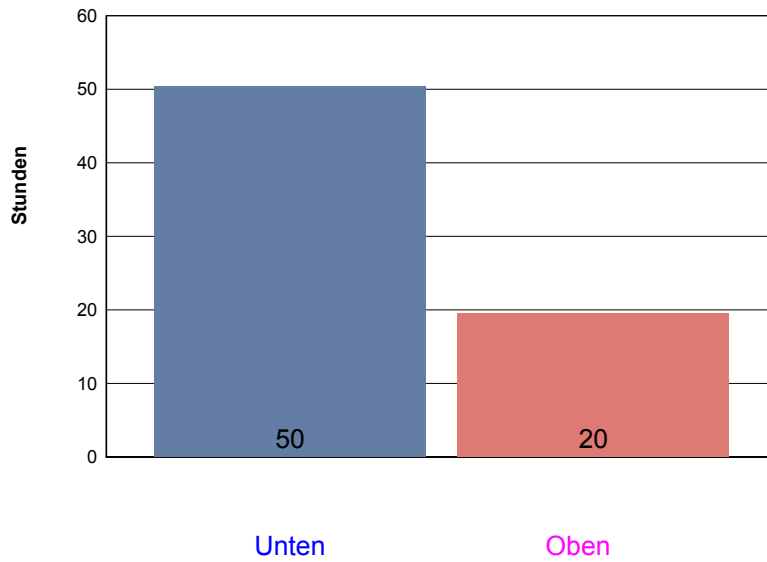


Ladedauer Oben 5.3
Ladedauer unten 6.8

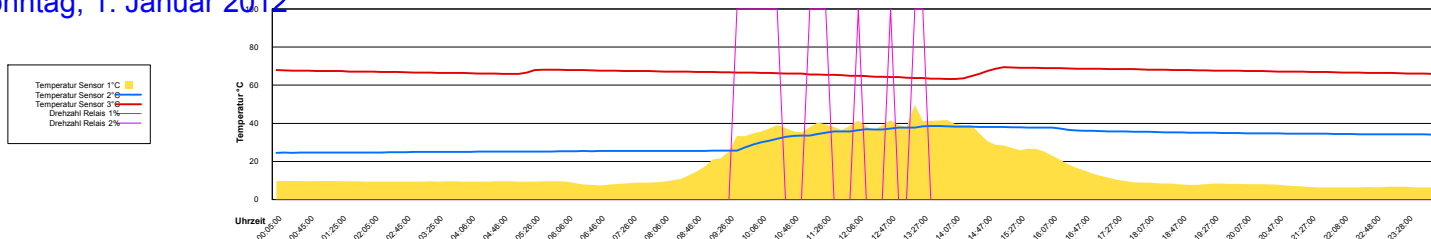
Januar 2012

Boiler-Ladezeiten

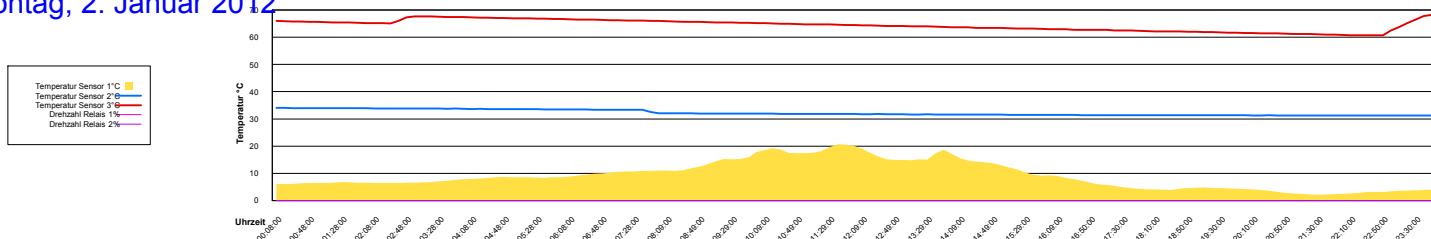
Monat



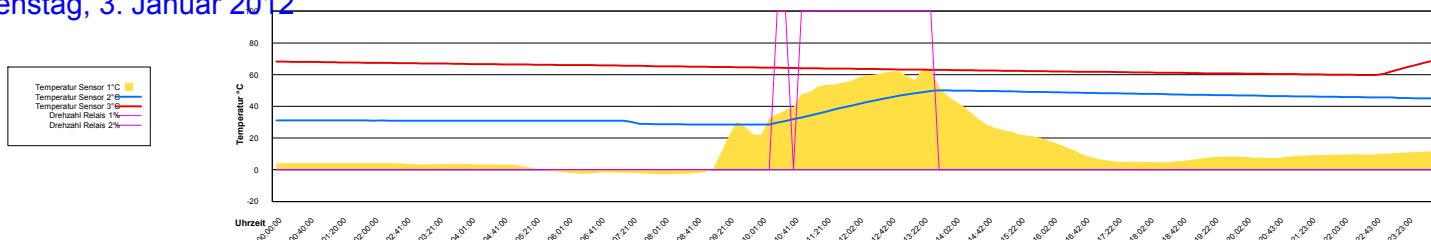
Sonntag, 1. Januar 2012



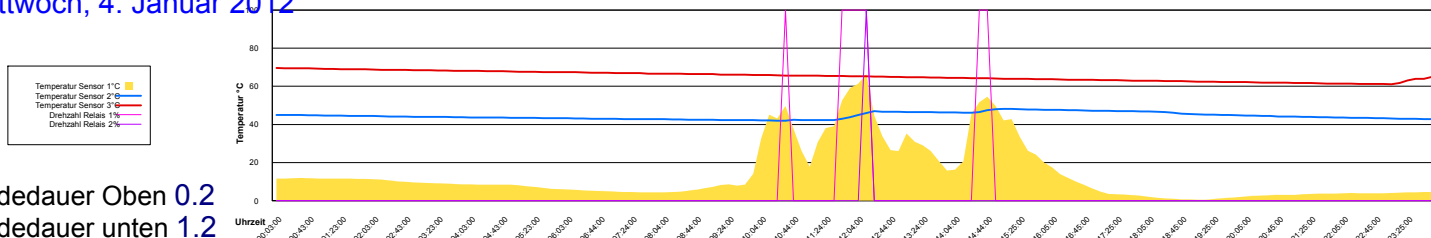
Montag, 2. Januar 2012



Dienstag, 3. Januar 2012

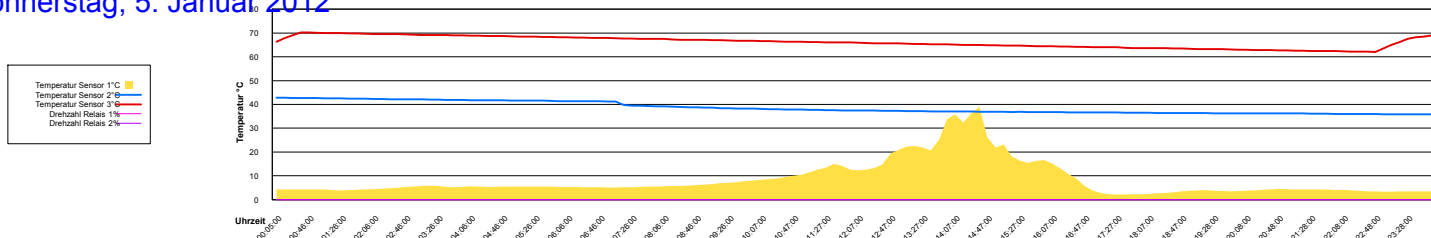


Mittwoch, 4. Januar 2012

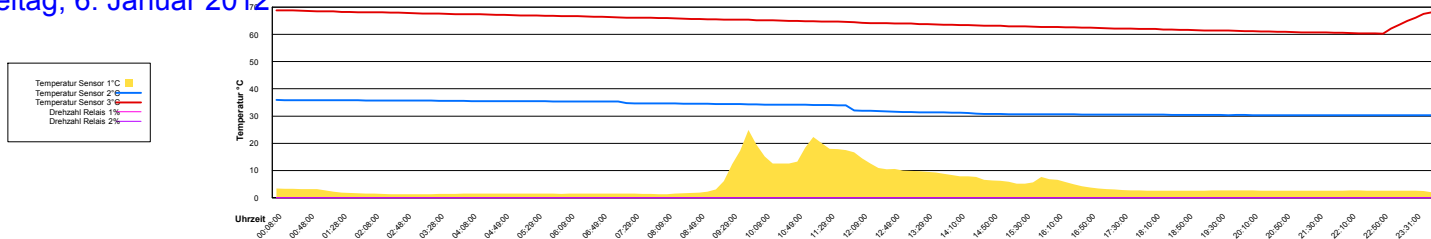


Ladedauer Oben 0.2
Ladedauer unten 1.2

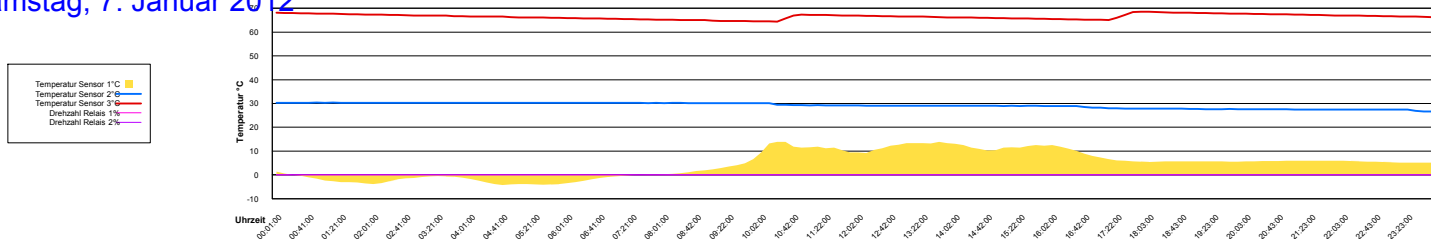
Donnerstag, 5. Januar 2012



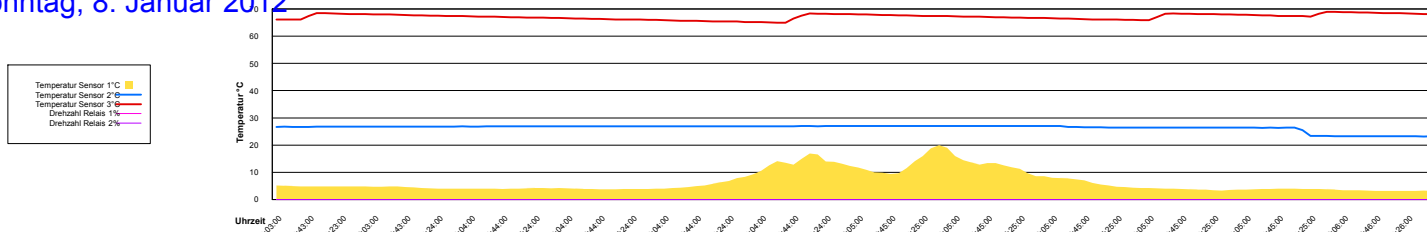
Freitag, 6. Januar 2012



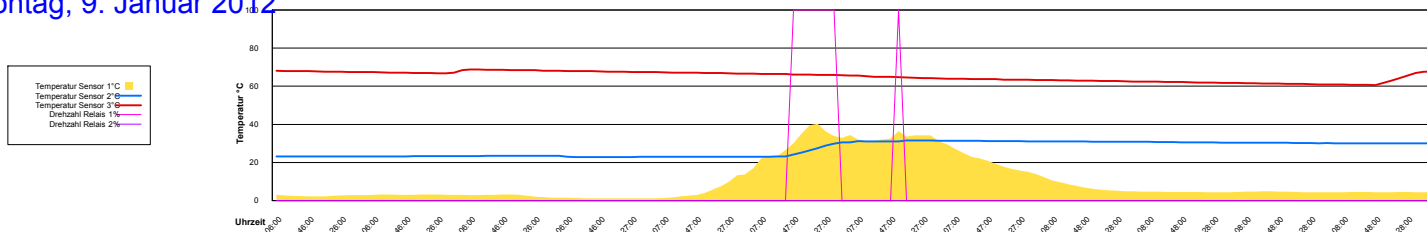
Samstag, 7. Januar 2012



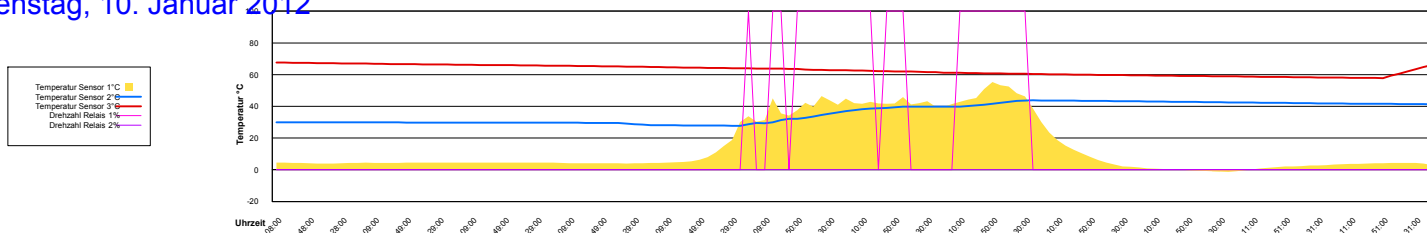
Sonntag, 8. Januar 2012



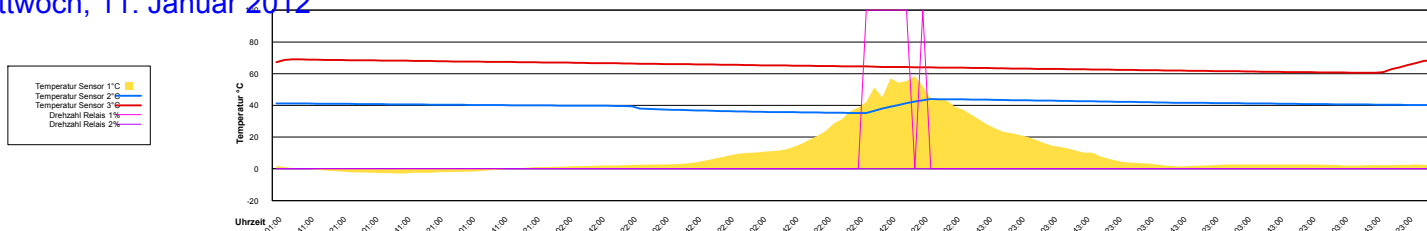
Montag, 9. Januar 2012



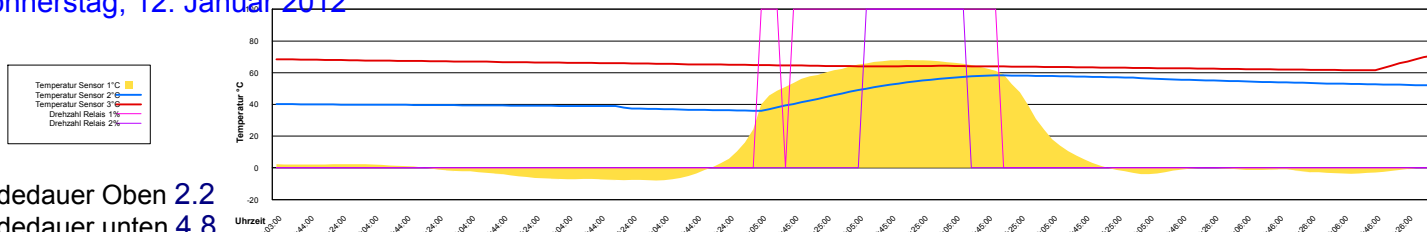
Dienstag, 10. Januar 2012



Mittwoch, 11. Januar 2012

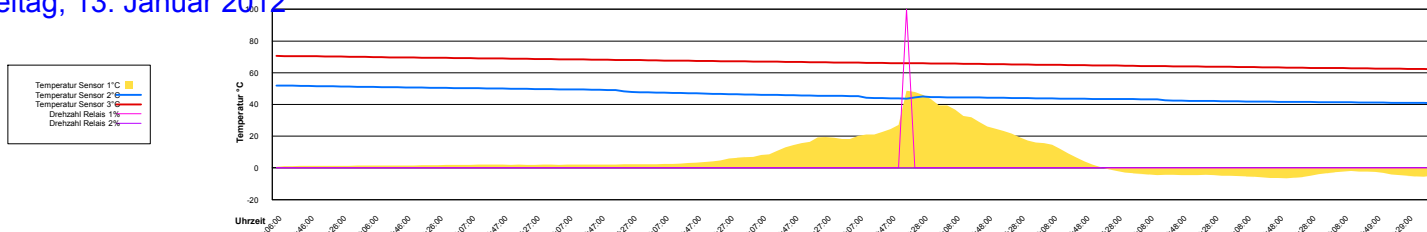


Donnerstag, 12. Januar 2012

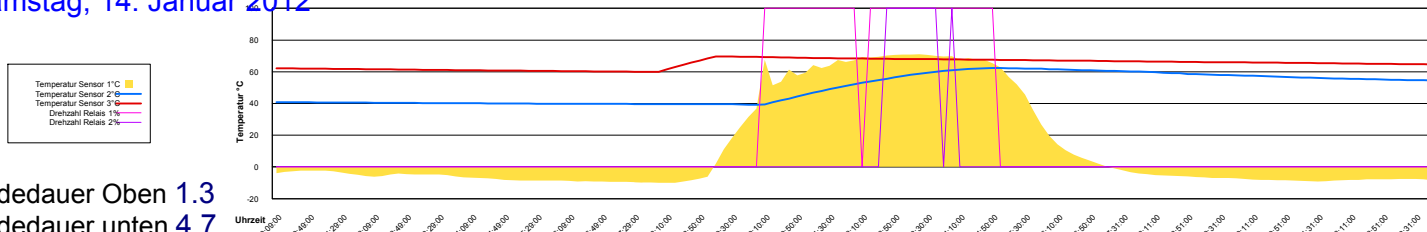


Ladedauer Oben 2.2
Ladedauer unten 4.8

Freitag, 13. Januar 2012

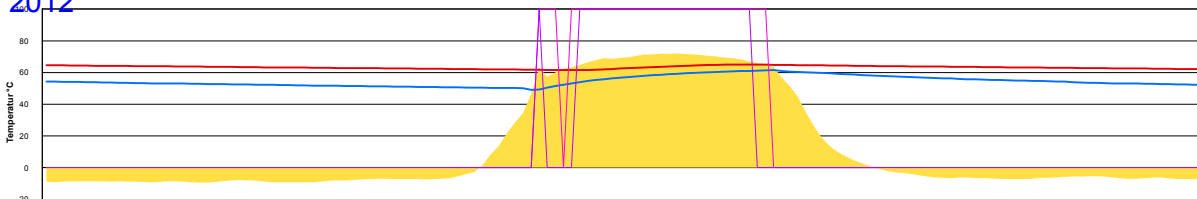
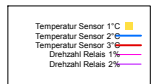


Samstag, 14. Januar 2012



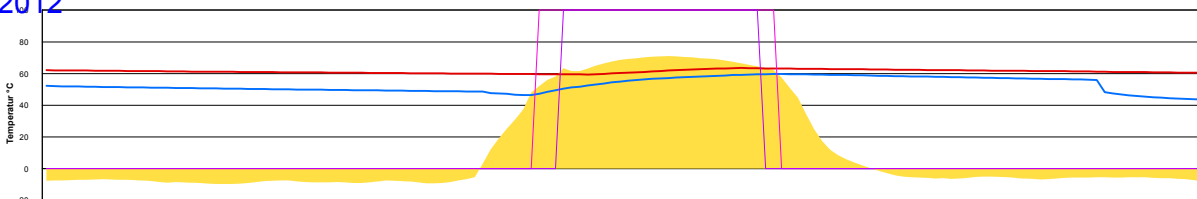
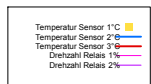
Ladedauer Oben 1.3
Ladedauer unten 4.7

Sonntag, 15. Januar 2012



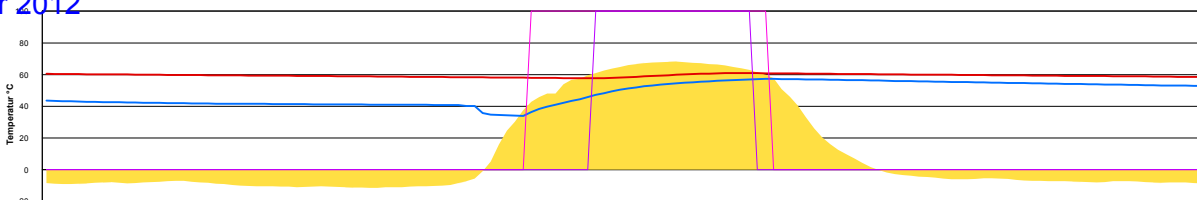
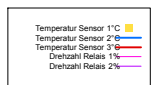
Ladedauer Oben 3.8
Ladedauer unten 4.7

Montag, 16. Januar 2012



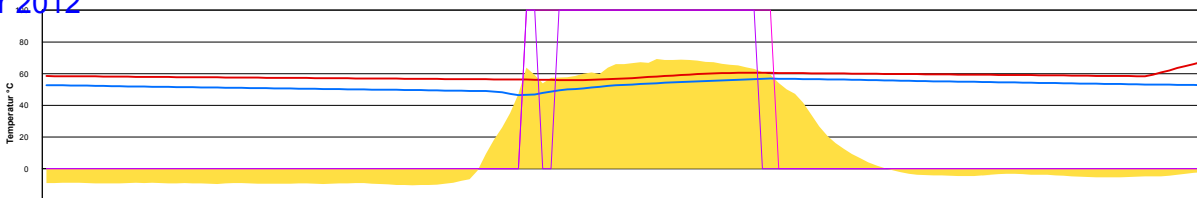
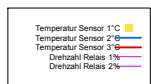
Ladedauer Oben 4.2
Ladedauer unten 5.0

Dienstag, 17. Januar 2012



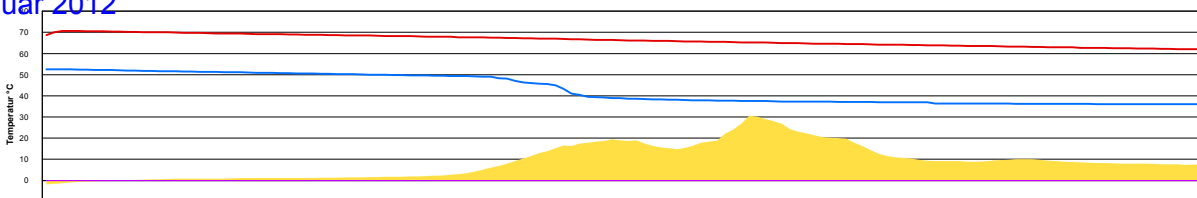
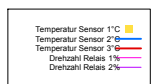
Ladedauer Oben 3.3
Ladedauer unten 5.0

Mittwoch, 18. Januar 2012

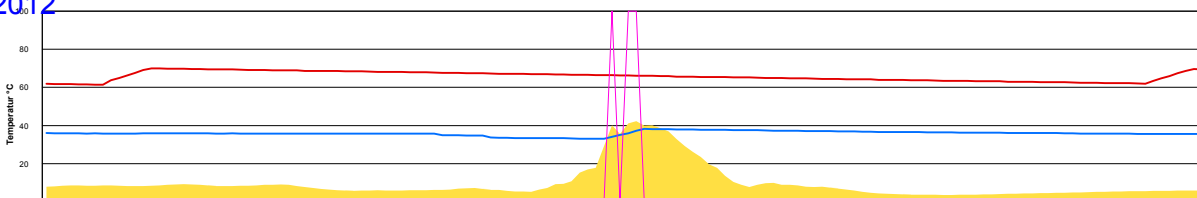
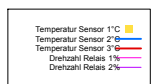


Ladedauer Oben 4.5
Ladedauer unten 5.2

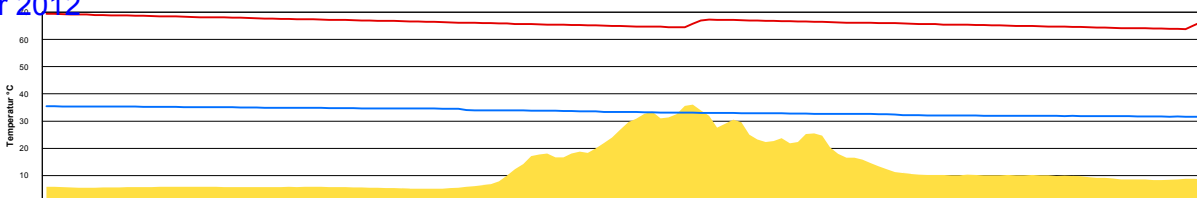
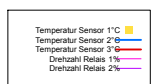
Donnerstag, 19. Januar 2012



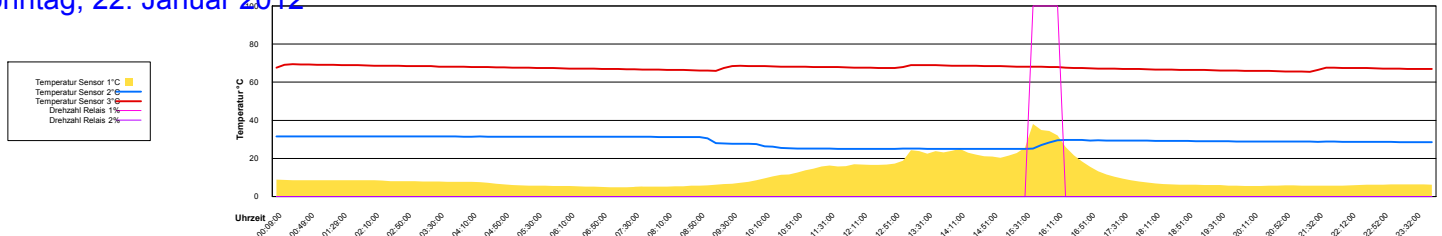
Freitag, 20. Januar 2012



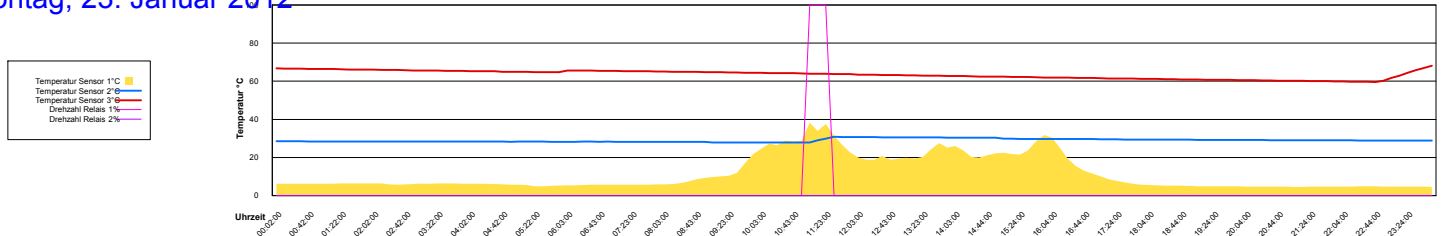
Samstag, 21. Januar 2012



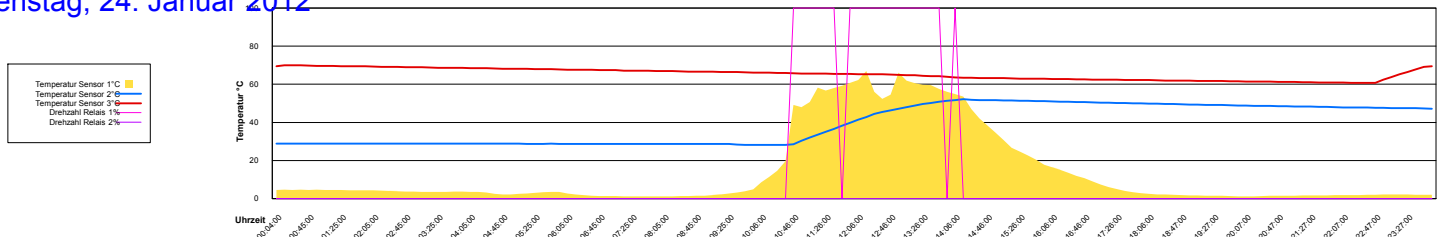
Sonntag, 22. Januar 2012



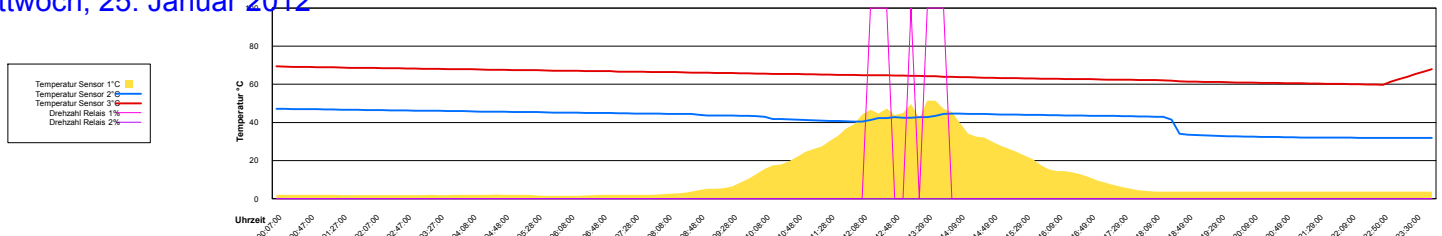
Montag, 23. Januar 2012



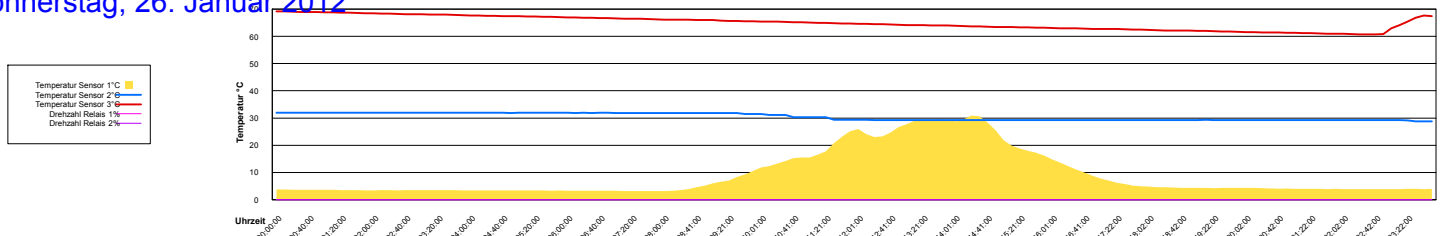
Dienstag, 24. Januar 2012



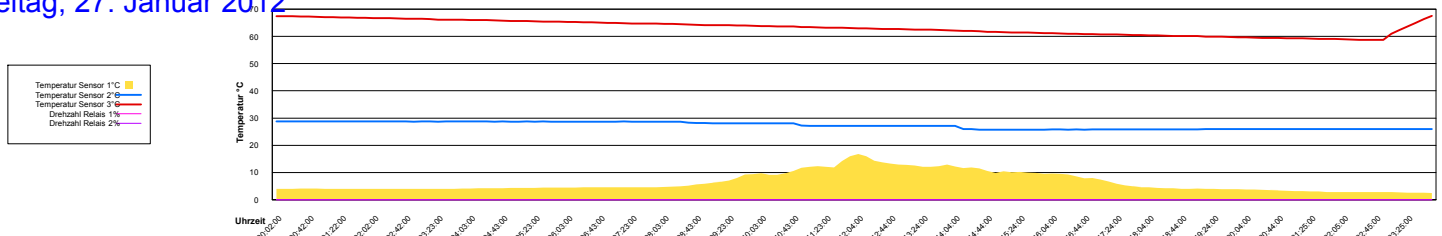
Mittwoch, 25. Januar 2012



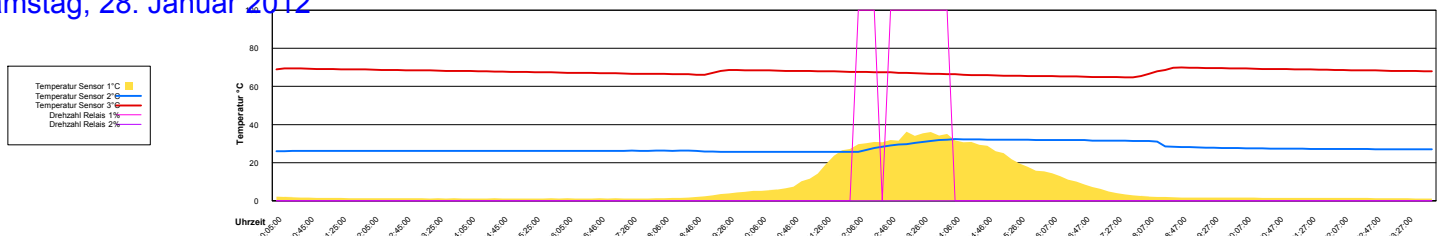
Donnerstag, 26. Januar 2012



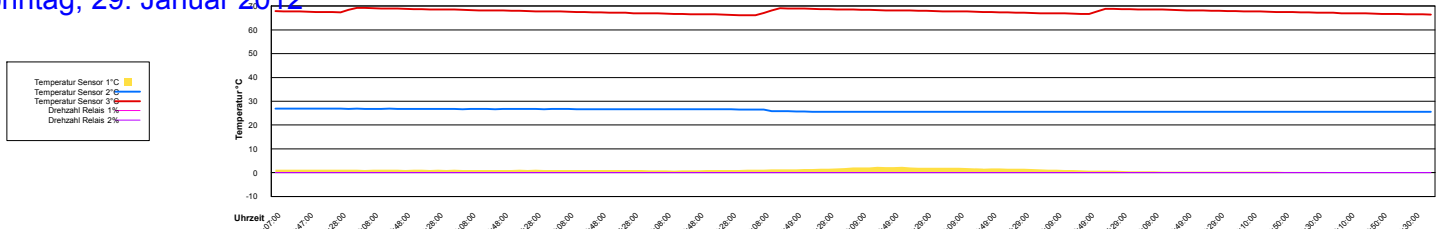
Freitag, 27. Januar 2012



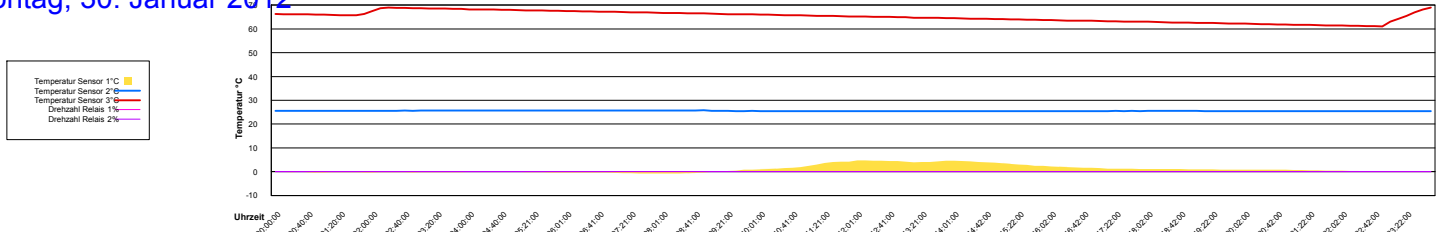
Samstag, 28. Januar 2012



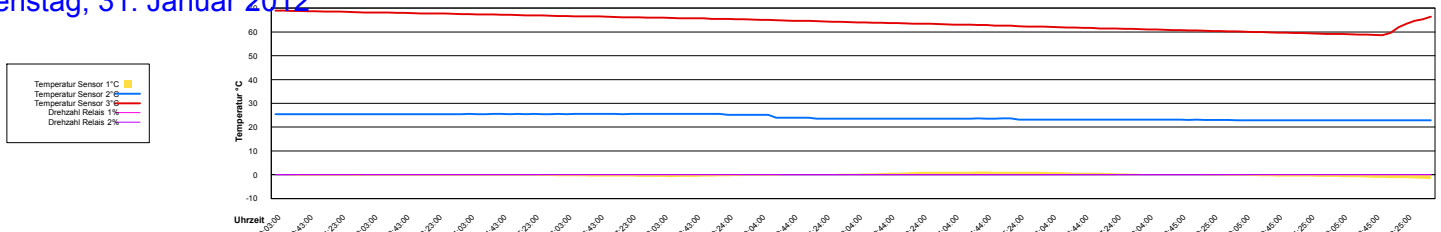
Sonntag, 29. Januar 2012



Montag, 30. Januar 2012



Dienstag, 31. Januar 2012



Gedruckt am: 03.03.2012

Zuletzt geändert: 03.03.2012

Datendatum: 03.03.2012

Beschreibung des Berichts:

Diagramm pro Tag mit Temperaturwerten.

Die Temperatur wird am Kollektor gemessen, der auf dem Dach installiert ist, und alle 10 Minuten aufgezeichnet. Der Boiler wird mit Schichtladung betrieben, deshalb die Bezeichnungen 'Oben' für das oben im Boiler liegende Wärmetauschelement und 'Unten' für das untere.

{t_Solardaten.Datum} in DateTime (2012, 01, 01, 00, 00, 00) to DateTime (2012, 12, 31, 23, 59, 59)

D:\EigeneDateien\4433\Solar\Temperaturen-aus-MDB.rpt